

# Bearna Coastal Amenity Park

## Sketch Concept

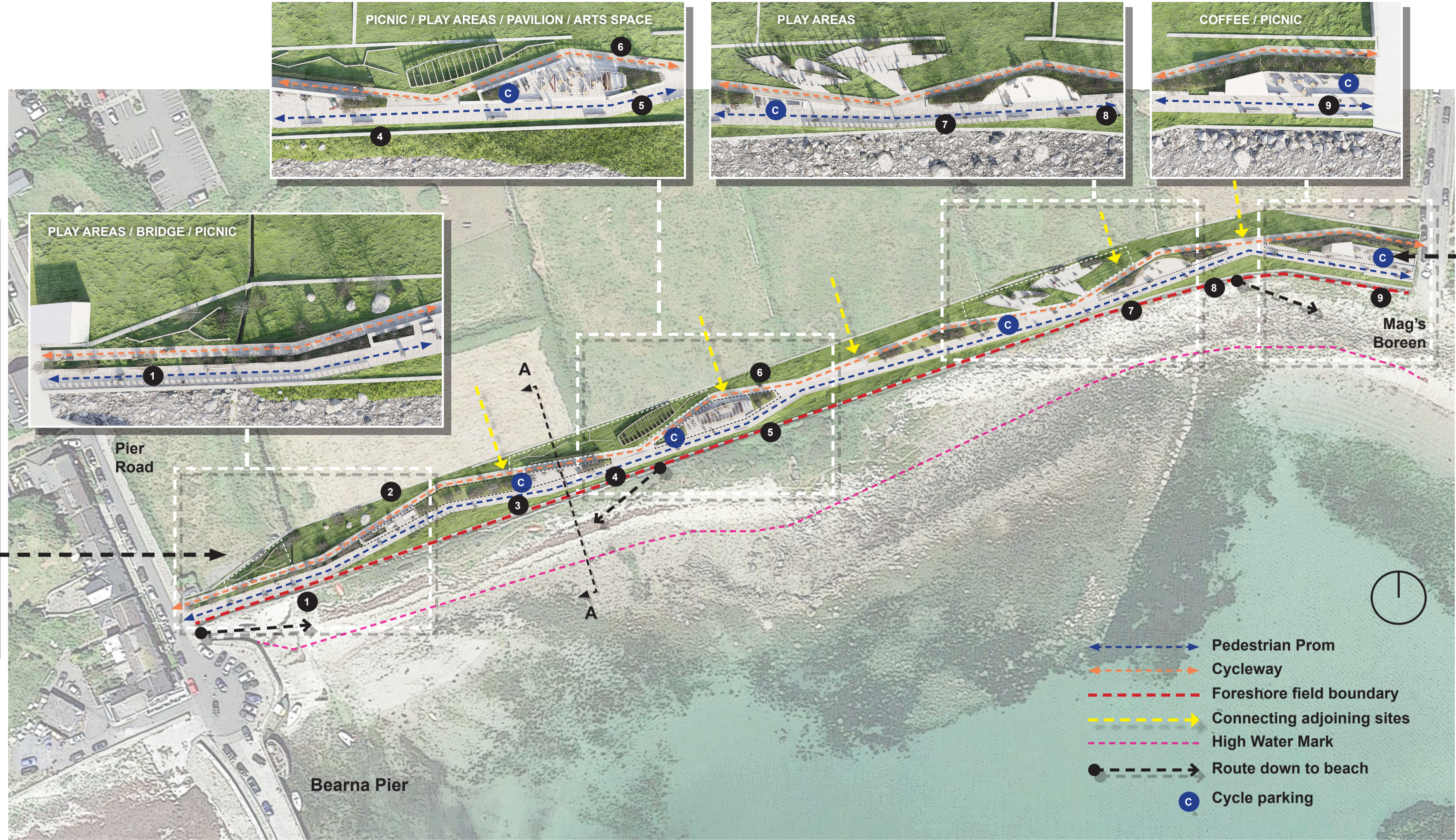
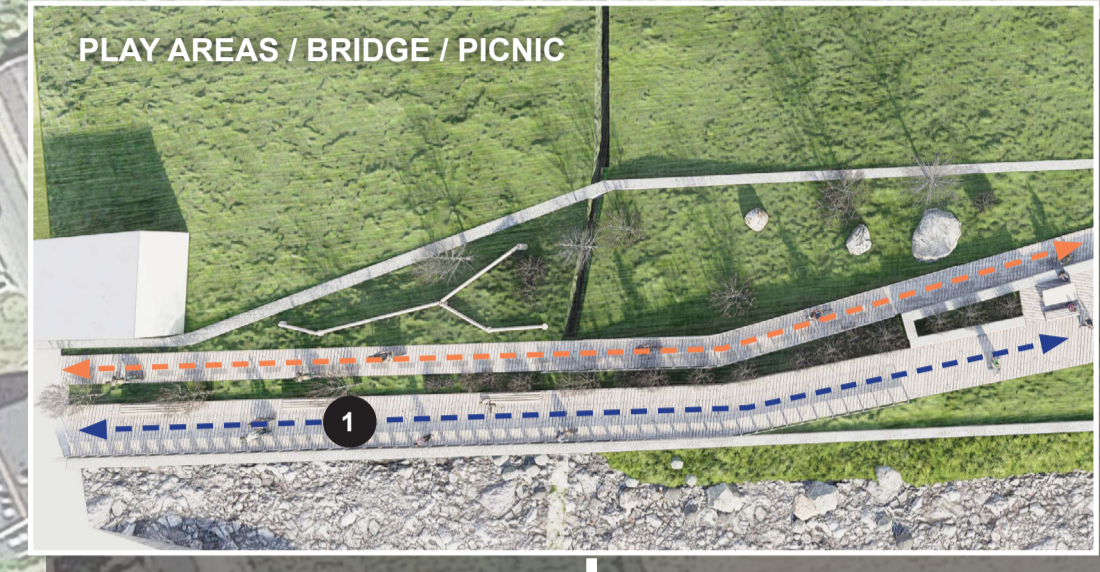
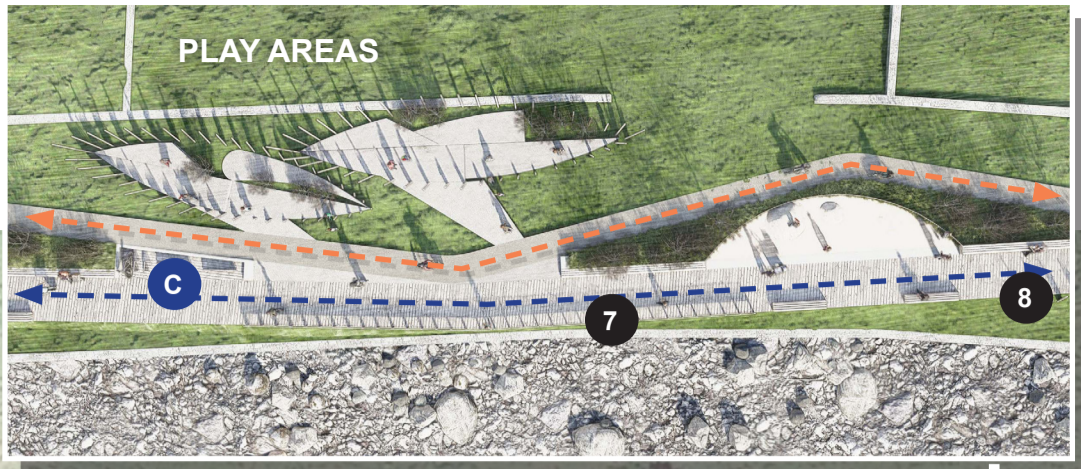
Key Views ▼

Entrance from Bearna Pier



Prom - looking towards Bearna Pier

Prom / seating area - looking towards Bearna Pier



- Pedestrian Prom
- Cycleway
- Foreshore field boundary
- Connecting adjoining sites
- High Water Mark
- Route down to beach
- Cycle parking

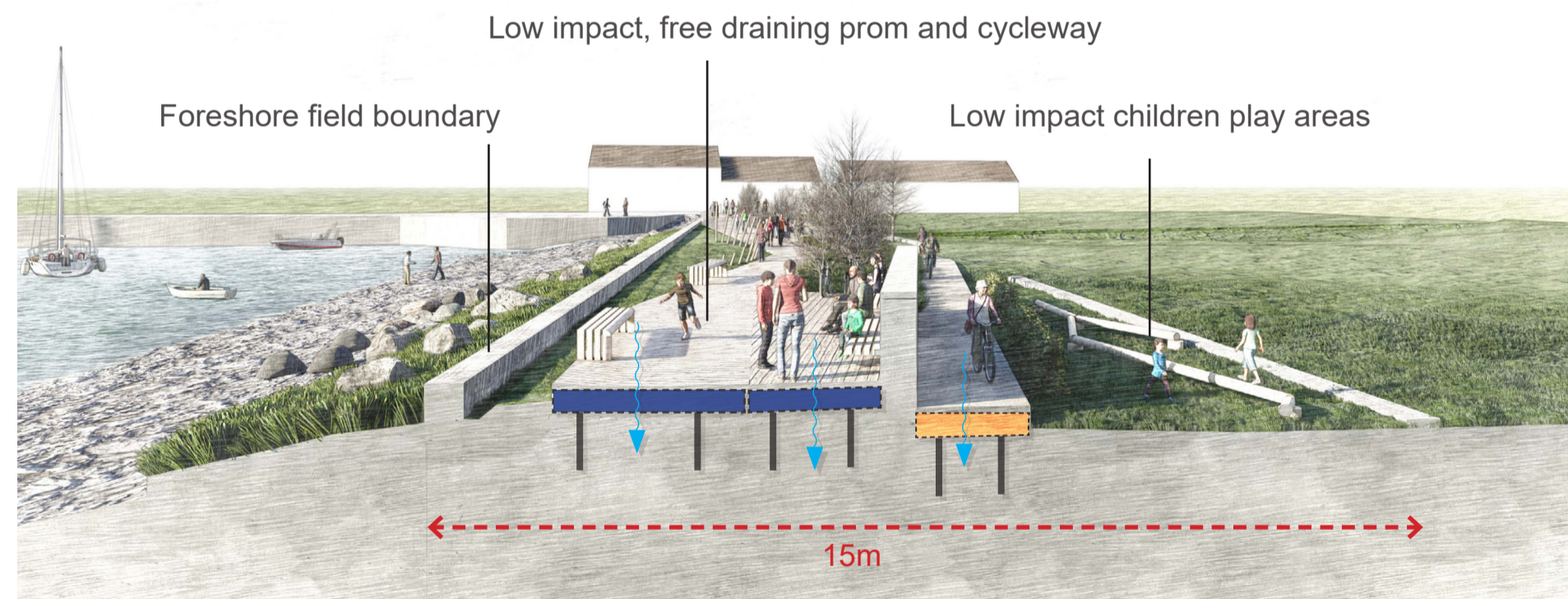


This sketch concept for a 15m wide Bearna Coastal Amenity Park has been designed to sit sensitively into the rugged landscape of Bearna's coastal edge, whilst being a focal point for both the community and tourists.

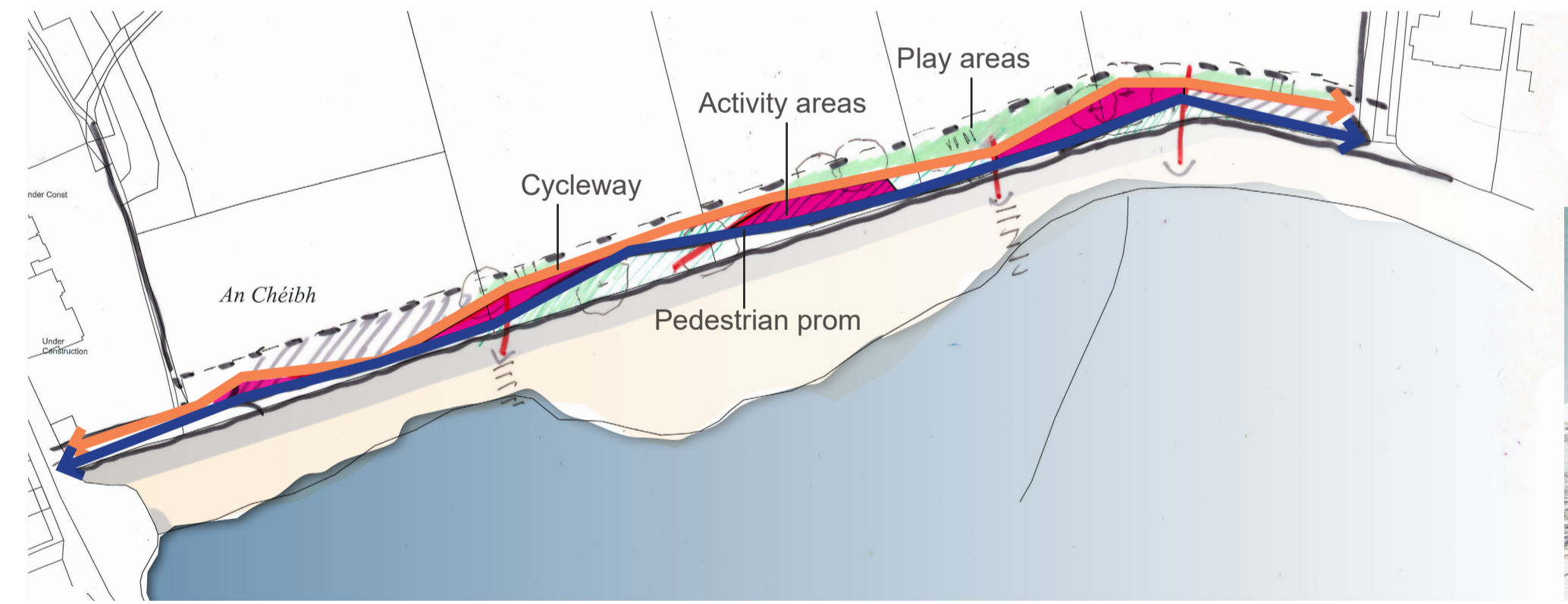
The concept is based on the principle of two meandering routes (pedestrian prom and cycleway), between Bearna Pier and Mag's Boreen, which diverge and meet to create moments of activity and overlap. This approach gives both routes their own independence of use, whilst meeting the growing desire for cycleway and pedestrian routes to be separated where possible.

The activities, and design, including accessibility and ecological considerations have been informed by key objectives and parameters within the previous Bearna LAP (2007-2017) and Draft County Development Plan (2022-2028), included activities as per the LAP would be a seaside prom, seating, picnic areas, children's play facilities, cycleway, in addition to a café, and a multi-purpose pavilion which could be utilised for exhibition, music, or community gatherings.

The materials indicated are robust, natural, and reflect the colours and textures of Nimmo's Bearna Pier, the coastal edge, and the maritime character of Bearna. Landscaping would be of a high biodiversity value, utilising appropriate, robust, native planting.



Concept section A-A



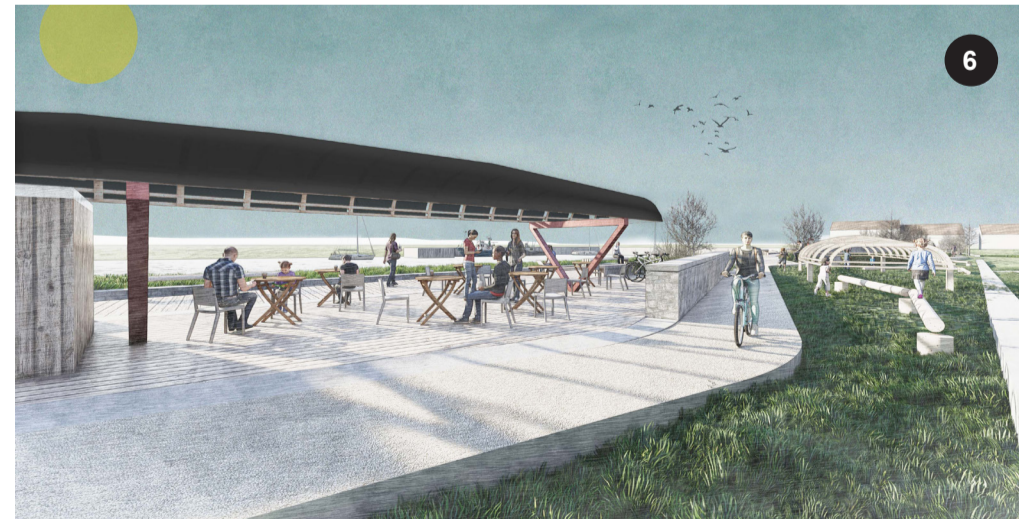
Concept sketch - Pedestrian Prom / Cycleway meander and meet at various locations, creating spaces of activity in between



Coffee / picnic area - Mag's Boreen entrance



Seasonal multi-purpose pavilion - arts space, picnic, event space



Seasonal multi-purpose pavilion - with roof covering (Summer)



Pedestrian prom / cycleway touch point / play areas



Prom / Sandpit play area

Site Material Palette References ▼



Precedent Project References ▼

